

As part of ongoing consultations to support the review of the Hume City Council's Gambling Harm Minimisation Policy, Council invited community service providers to a workshop in June 2023 to share their insights on how gambling is impacting the Hume City community.

Here is a summary of what community service providers told us:

### Top 3 types of gambling that community service providers are seeing



Sports betting



Poker machines



Trackside & horses/dogs, TAB/phone betting & lotto (came in as an equal third)

### Top 5 gambling harms and impacts that community service providers are seeing



Financial stress/debt



Family breakdown/family violence



Shame and stigmatisation



Mental health and wellbeing impacts



Relationship breakdowns



### Community service providers identified the following changes required to reduce and prevent gambling harm



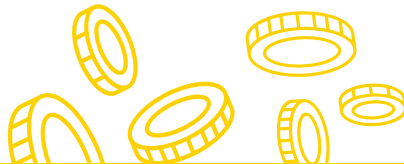
Stronger restrictions – such as uniform regulation across all gambling modalities



Fund gambling harm services the same way as other public health issues



Stronger regulations – such as National regulation of all forms of gambling



### Next steps

Council will be carrying out several community consultations to support the Gambling Harm Minimisation Policy review. Stay tuned to our Participate Hume page for the latest updates, by visiting [participate.hume.vic.gov.au](https://participate.hume.vic.gov.au)